



Our Quality is Our Identity...

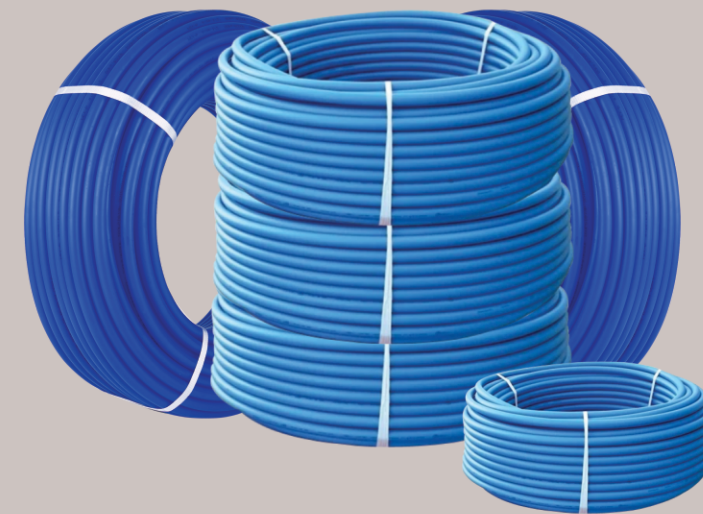


Our Quality is Our Identity...

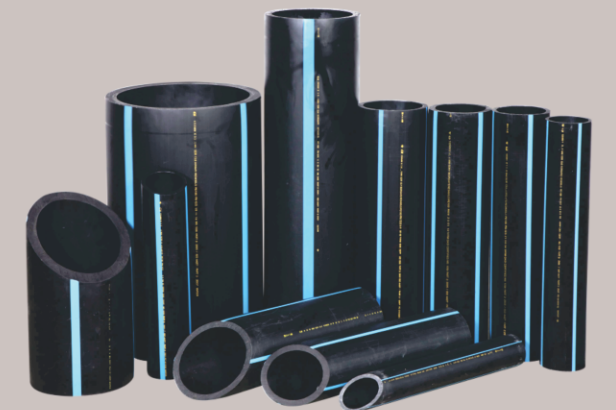


- Hdpe Pipe & Fittings
- Mdpe Pipe & Fittings
- Spigot Fittings
- But Fittings
- Electronfusion Fittings

### MDPE PIPE



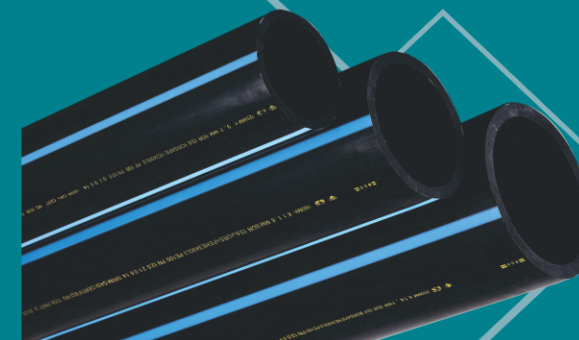
### HDPE PIPE



## MADHAV INDUSTRIES

### MADHAV INDUSTRIES

- 📍 Factory Add.: Umiya In Estate Sd No.1+57/8, Lothada, Rajkot.
- 📍 Office Add.: Virani Aghat, Pragati-03, B/H Kamnath Weigh Bridge, Rajkot-360002 (Gujarat)
- ☎ 91 2626 6060 / 91 2626 8080
- ✉ sales@madhavindustries.co
- 🌐 www.acrol.co / www.madhavindustries.co



"Complete Solution for Water Supply  
Reliable, Sustainable and Efficient"



**Electrofusion Coupler**  
 SIZE : 20 TO 315 mm



**Electrofusion End Cap**  
 SIZE : 20 TO 315 mm



**Electrofusion Elbo 90°**  
 SIZE : 20 TO 315 mm



**Electrofusion Tee**  
 SIZE : 20 TO 315 mm



**Electrofusion Reducer**  
 SIZE : 50 x 32 TO 315 x 280 mm



**Electrofusion Ball valve**  
 SIZE : 10 To 90 mm



**Electrofusion Elbow 45°**  
 SIZE : 63 To 315 mm



**Electrofusion Saddle**  
 SIZE : 63 To 160 mm



**Integrated Saddle.**  
 SIZE : 32 TO 315 mm



**Electrofusion Tapping Tee.**  
 SIZE : 63 To 110



**Electrofusion Welding Machine**



**Electrofusion Elbow**  
 SIZE : 20 TO 315



**Compression SS MTA**



**Compression SS FTA**



**Compression Brass MTA**



**Compression Brass FTA**



**Compression MTA**



**Compression FTA**



**Compression SS Elbow MTA**



**Compression SS Elbow FTA**



**Compression Brass Elbow MTA**



**Compression Brass Elbow FTA**



**Compression Elbow MTA**



**Compression Elbow FTA**



**Compression Elbow**



**Compression End Cap**



**Compression Coupler**



**Blue Service Saddle**



**HDPE Brass Service Saddle**



**HDPE Service Saddle**



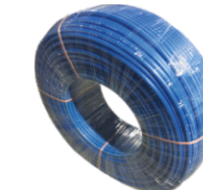
**SS Flow Control Valve**



**Brass Ferrul**



**Brass Tap (Brass Cock)**



**MDPE Pipe**



**Compression Ball Valve**



**Water Meter Protection Box**

**HDPE SPIGOT FITTINGS**



**Spigot Tee**  
 SIZE : 20 TO 315 mm



**Spigot Reducer**  
 SIZE : 50 x 32 TO 315 x 280



**Spigot 90° Elbow**  
 SIZE : 20 TO 315 mm



**Tail Piece Flange**  
 SIZE : 63 TO 200 mm



**Spigot End Cap**  
 SIZE : 20 TO 315 mm



**Spigot Reducing Tee**  
 SIZE : 20 TO 315 mm



**Spigot Pipe End Tail Piece**



**Spigot 45° Elbow**  
 SIZE : 63 TO 200 mm



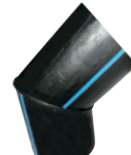
**HDPE Ball Valve**  
 SIZE : 40 TO 110 mm



**Fabricated Y**  
 SIZE : 63 TO 110 mm



**Fabricated Cross**  
 SIZE : 63 TO 355 mm



**Fabricated Elbow**  
 SIZE : 63 TO 355 mm

Note : Service Saddle and MDPE Fittings available in Brass & S.S. Insert Rate at a time of Order.